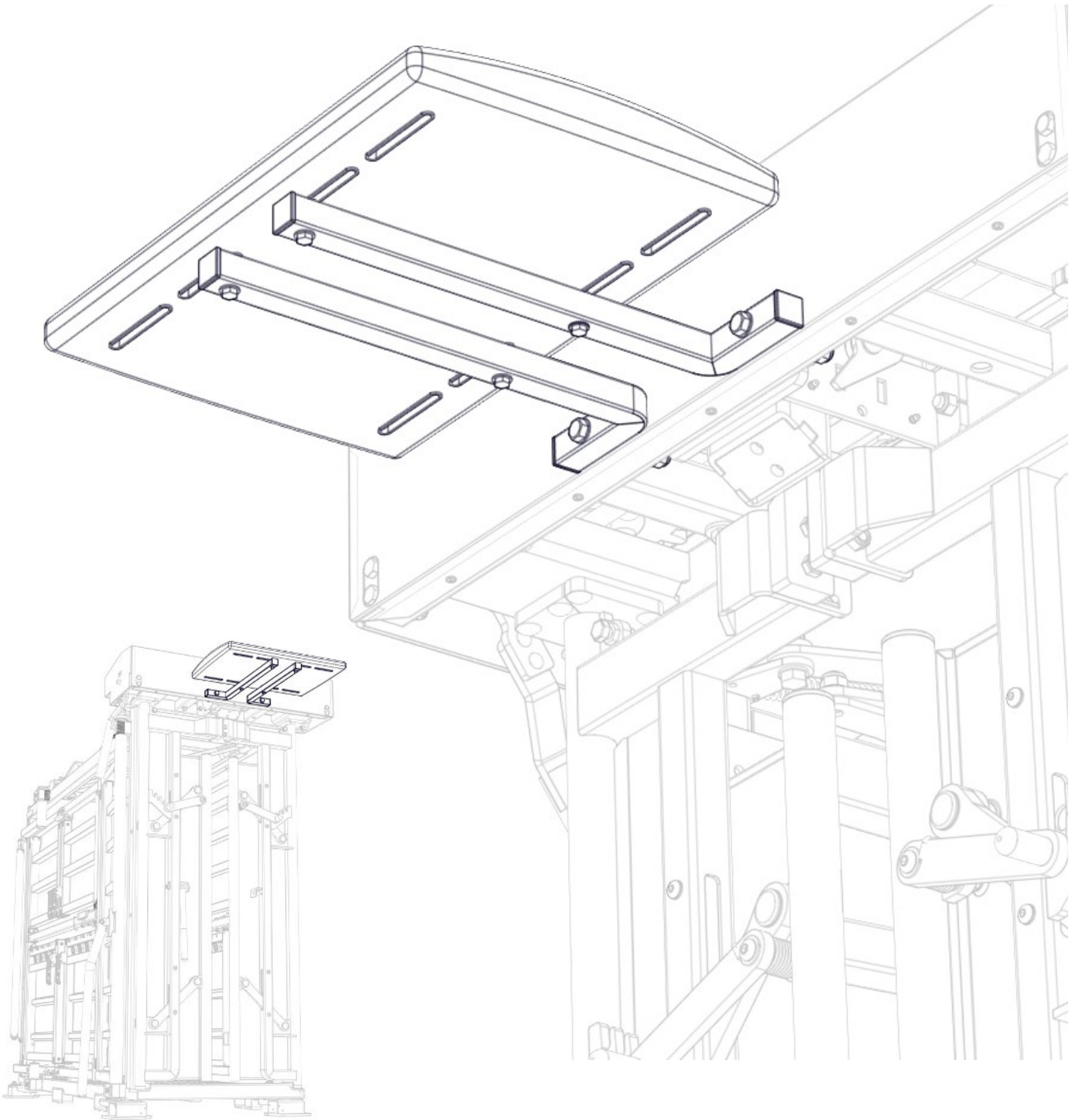




Call: +44 (0)1782 339320 | Email: [sales@iae.co.uk](mailto:sales@iae.co.uk) | Weblink: <https://iae.co.uk/>



## 800 SERIES ID READER KIT

INSTALLATION, OPERATION & MAINTENANCE

*TECHNICAL DOCUMENT NO. 1003594-01*

## INTENDED USE

Associated with the option to fit id reader unit, use overhead fixing brackets to attach antenna panel to the yoke framework, pick up on existing fixing holes on the yoke mechanism shroud.

## TECHNICAL DATA

**Item Number:** 1003656-01

**Load:** 1000 Kg Max.

**Weight:** 2 Kg *(not including the crush or the antenna panel itself)*

## COMPATIBLE WITH IAE CRUSHES

- ✓ A800 FULL ACCESS CRUSH - 1002397-01
- ✓ A800 SQUEEZE CRUSH - 1002395-01
- ✓ M800 FULL ACCESS CRUSH - 1002396-01
- ✓ M800 SQUEEZE CRUSH - 1002398-01

## TOOLS REQUIRED FOR ASSEMBLY

Adjustable wrench / spanner set

# SAFETY INFORMATION

PLEASE TAKE NOTE OF THE FOLLOWING SAFETY PRECAUTIONS BEFORE USE FOR THE WELLBEING OF ALL ANIMALS AND PERSONNEL. ANY HARM OR INJURY WHICH OCCURS FROM THE LACK OF COMPLIANCE WITH THESE HEALTH AND SAFETY MEASURES WILL BE THE RESPONSIBILITY OF THE OPERATOR.

- ❑ **IMPORTANT!** Read these instructions carefully before use and keep them for future reference. The safety of your animals may be affected if you do not follow these instructions in this manual.
- ❑ **WARNING! DANGER TO LIFE AND RISK OF ACCIDENTS FOR INFANTS AND CHILDREN!** Keep children away from the product when in operation.
- ❑ Situate this product on a level, solid surface.
- ❑ **WARNING!** Be careful with hands, fingers and limbs when operating the crush.
- ❑ Personal protection may be required for some stages of installation, and/or operation.
- ❑ **CAUTION!** When handling heavy equipment, some stages of installation may require at least two people.
- ❑ **DO NOT** lean on or exert undue pressure on the product.
- ❑ **CAUTION!** Check posture when lifting/manoeuvring the equipment or associated parts.
- ❑ **ALWAYS** Check the product for damage before each use.
- ❑ **NEVER USE THE PRODUCT IF IT IS DAMAGED.**

If you have any questions or comments regarding the product, we will be glad to hear them either through our website [www.iae.co.uk](http://www.iae.co.uk) or by contacting your local IAE dealership.

**INTRODUCTION**.....

**INTENDED USE** .....Page 2

**TECHNICAL DATA**.....Page 2

**COMPATIBLE WITH IAE CRUSHES**.....Page 2

**SAFETY INFORMATION**.....Page 3

**PRODUCT PARTS LIST** .....Page 5

**ASSEMBLY** .....Page 6

**RECOMMENDED MAINTENANCE**.....Page 7

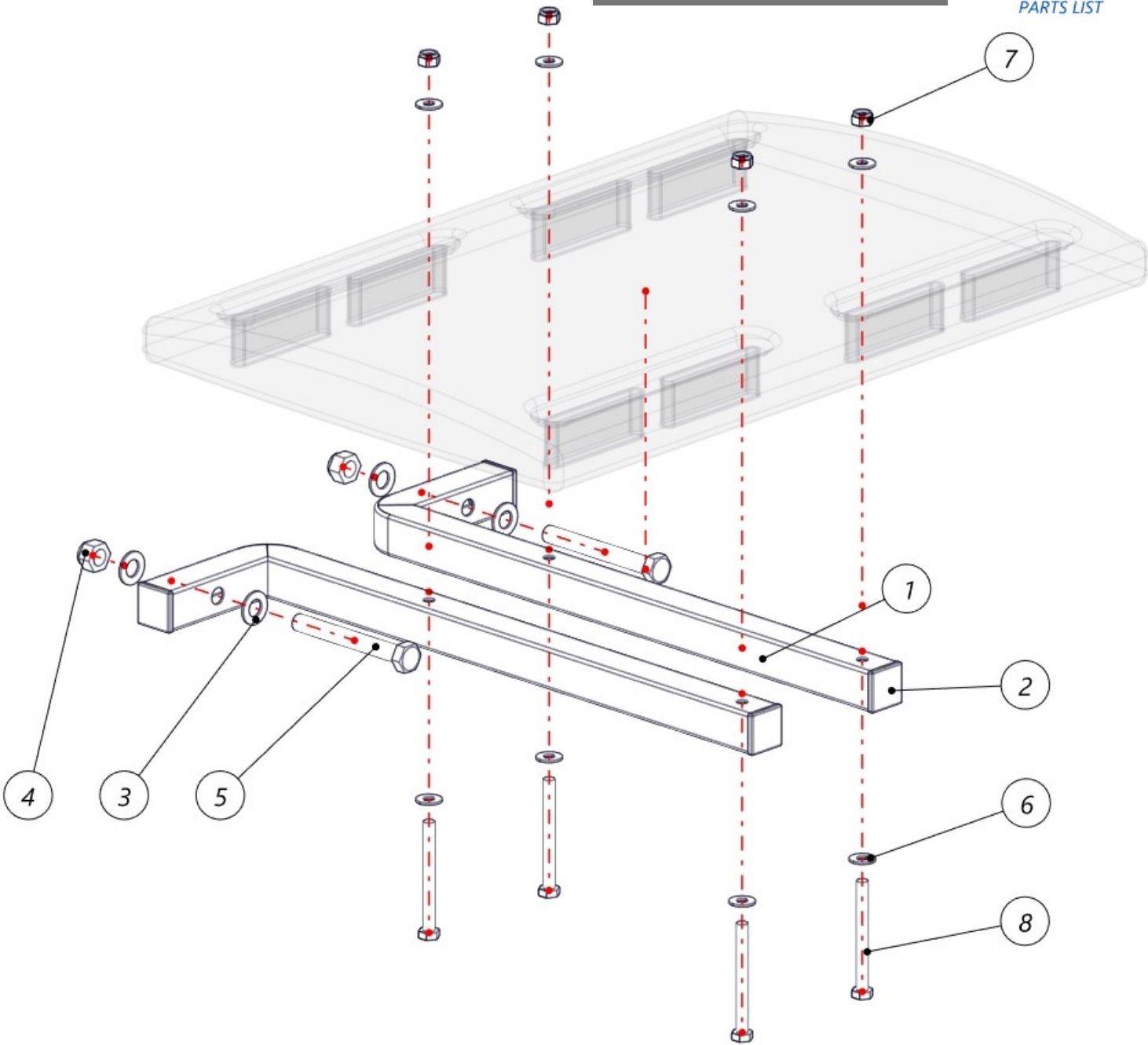
**CONTACT**.....Page 7

# PRODUCT 1003656-01



PARTS LIST

NOTE: ANTENNA PANEL NOT INCLUDED



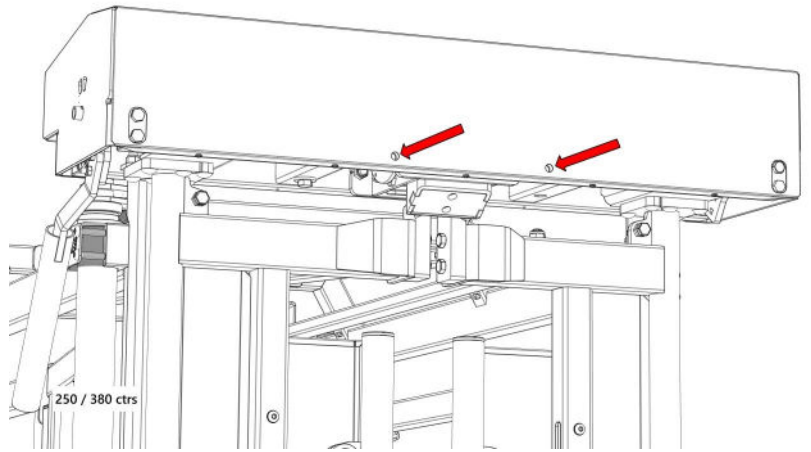
| ID | DESCRIPTION                      | PRODUCT      | Qty |
|----|----------------------------------|--------------|-----|
| 1  | OVERHEAD READER FIXING BRACKET   | 1002294-01   | 2   |
| 2  | 30X30X1.5-3W BLUE PLASTIC INSERT | 1001853-01   | 4   |
| 3  | M12 FORM B WASHER                | B041 3020 12 | 4   |
| 4  | M12 NYLOC NUT                    | B040 3002 12 | 2   |
| 5  | M12X100 SETSCREW                 | B001 3121 00 | 2   |
| 6  | M8 WASHER                        | B041 3001 08 | 8   |
| 7  | M8 FULL NYLOC NUT                | B040 3002 08 | 4   |
| 8  | M8 X 80 BOLT                     | B003 3080 80 | 4   |

# ASSEMBLY

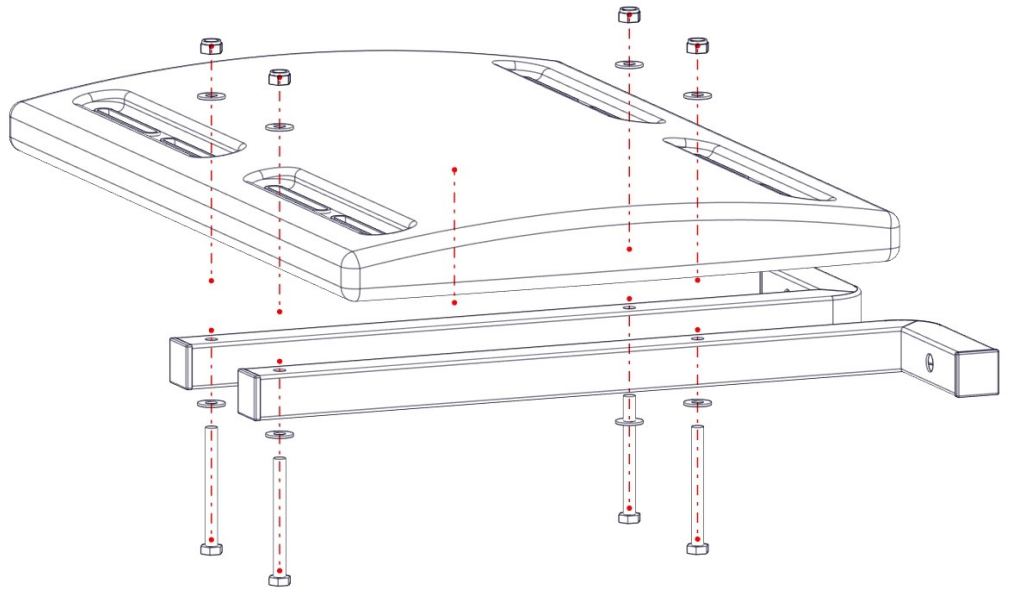
1 To start, set distance for fixing bracket centres, varies dependent upon application,

**M800 yoke** = 250mm centres  
**A800 yoke** = 380mm centres

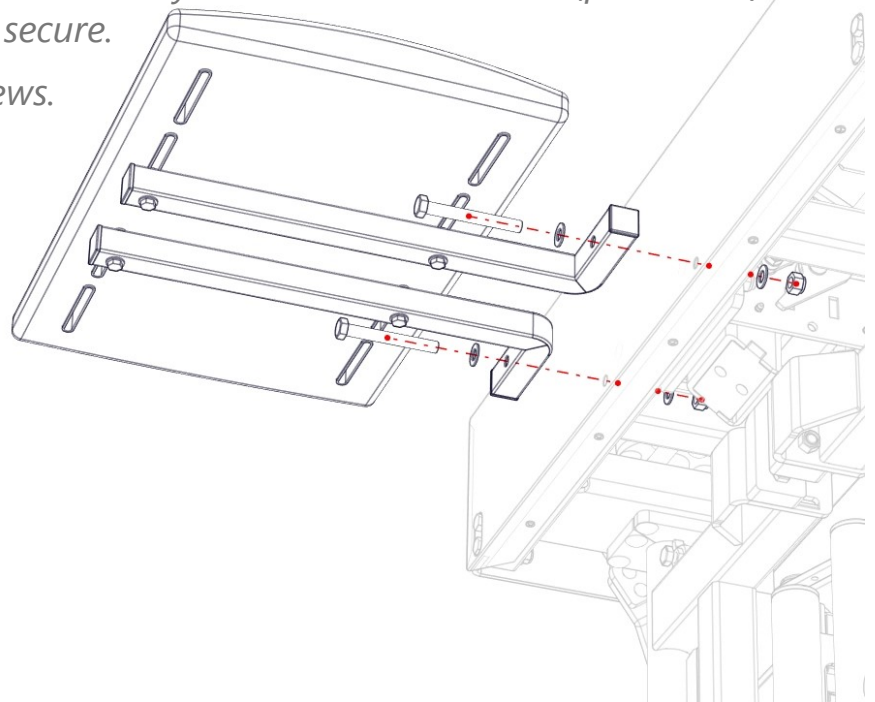
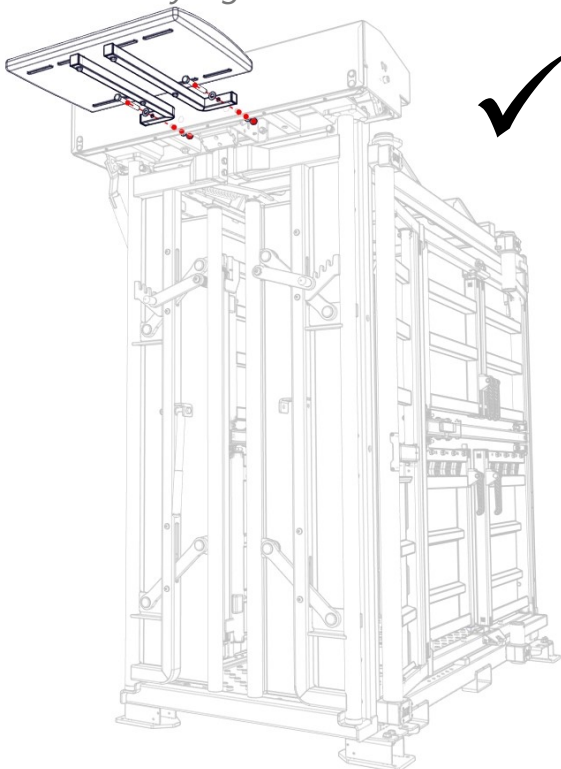
Note: image depicts auto yoke fixing holes



2 Replace with half side panels, both upper and lower using corresponding fitting holes.



3 Fit id reader loose assembly to the auto yoke mechanism shroud (pre-drilled), use screws (x2 m12 x 100) to secure. Fully tighten all nuts and screws.



# RECOMMENDED MAINTENANCE

REGULAR MAINTENANCE CHECKS TO THE PRODUCT WILL GIVE EARLY WARNING OF ANY PROBLEMS, SUCH AS DAMAGE, CORROSION OR MISSING PARTS...THIS WILL ENSURE YOUR PRODUCT IS RUNNING SMOOTHLY AND SAFELY.

- General inspection of the entire product.
- Ensure all moving components are free of debris and are functioning correctly.
- Any damage to steelwork (causing exposure of bare metal) should be made good by rubbing down and applying x1 coat of galvanizing coating and x1 of oil based paint.
- Check all fasteners sets are tight. Ensure all parts are in place before each use.
- Remove any obstructions
- Simply cleaning down after each use will increase the working life due to the highly corrosive effect of animals urine and/or faeces.

## CONTACT

IAE HEADQUARTERS  
Mossfield Road  
Adderley Green  
Stoke-on-Trent  
England  
ST3 5BW

T: +44 (0)1782 339320

F: +44 (0)1782 339321

E: [sales@iae.co.uk](mailto:sales@iae.co.uk)

Company Reg number: 01448116 Company VAT number: 319060967

*TECHNICAL DOCUMENT NO. 1003594-01*