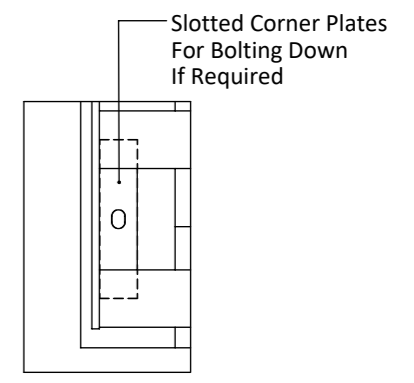
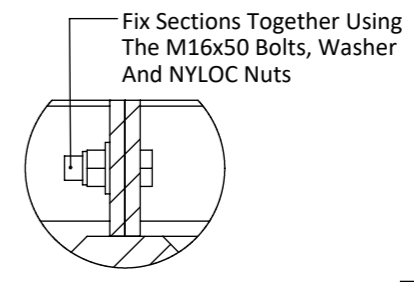


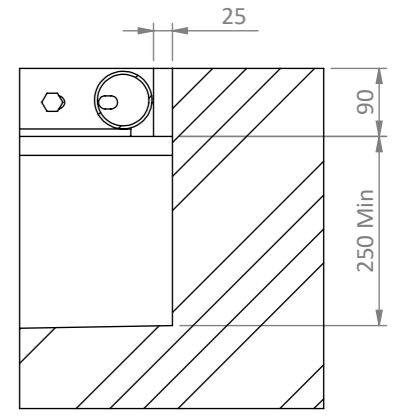
DETAIL C
SCALE 1 : 10



DETAIL D
SCALE 1 : 10



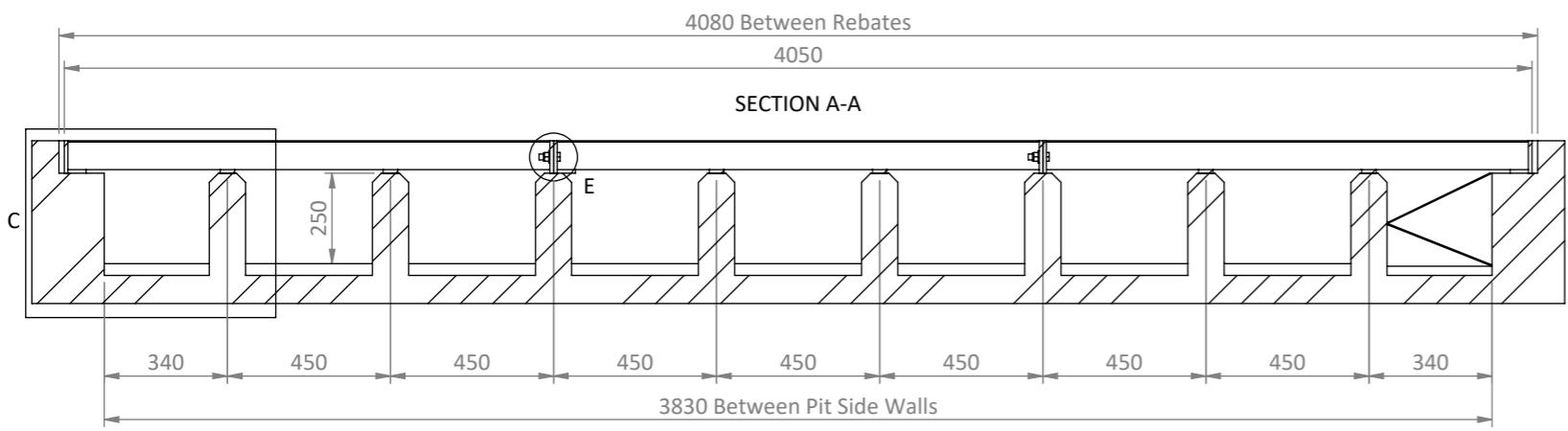
DETAIL E
SCALE 1 : 5



DETAIL F
SCALE 1 : 10

Cattle Grid Is Fabricated In 3 No Sections For Bolting Together

Please Note
Guard Fencing Needs To Be Erected On Both Sides Of The Cattle Grid To Prevent Encroachment By Animals And Also To Position Vehicles Correctly On The Approach To The Grid.



IAE
Tel: 01782 339320
Fax: 01782 339322
www.iae.co.uk
email.sales@iae.co.uk

THE INFORMATION CONTAINED IN THIS DRAWING IS THE PROPERTY OF "IAE". COPYRIGHT IS RESERVED BY THEM AND THE CONTENT USED ON THE CONDITION THAT IT IS NOT COPIED, REPRODUCED, RETAINED OR DISCLOSED TO ANY UNAUTHORISED PERSON EITHER WHOLLY OR IN PART WITHOUT THE CONSENT IN WRITING OF "IAE"

TITLE 30 TONNE CATTLE GRID ASSEMBLY COMP OF PART No. F080 2010 30 Rev. B		GENERAL NOTES 1. REMOVE ALL BURRS & SHARP EDGES 2. ALL THREADS TO BE ISO METRIC COARSE 3. ALL HOLES ON CTR (UNLESS OTHERWISE STATED)		GENERAL TOLERANCES (UNLESS OTHERWISE STATED) BOUGHT IN MADE IN HOUSE 0 - 100 +/- 0.25 REFER TO IAE 100 - 500 +/- 0.5 TOLERANCE STDS 500+ +/- 1 ANGULAR +/- 0.5° ALL DIMENSIONS ARE IN MILLIMETRES	
WELDING NOTES 1. FULLY WELD (UNLESS OTHERWISE STATED) 2. ALL WELDS TO BE FREE OF SPIKES & SPATTER		MATERIAL MILD STEEL FINISH HOT DIP GALV EST. NATURAL WEIGHT(kg.) 530.03		SCALE 1:20 DO NOT SCALE DO NOT SCALE DATE 01/11/2012 IF IN DOUBT - ASK!	
MATERIAL MILD STEEL FINISH HOT DIP GALV EST. NATURAL WEIGHT(kg.) 530.03		A3 SCALE 1:20 DO NOT SCALE DO NOT SCALE		DATE 01/11/2012 IF IN DOUBT - ASK!	

B	DRAWING BORDER UPDATED TO IAE DRAWING STANDARDS	2259	SDR	05/08/2015
A	FIRST ISSUE	N/A	SS	01/11/2012
REV	DESCRIPTION	ECR	INT	DATE

ITEM NO.	PART NUMBER	DESCRIPTION	QTY.
1	F080 2010 31	1350 W X 2600 D SECTION OF 30T C/GRID	3
2	B041 2006 16	M16 WASHER FORM F GALV	8
3	B040 2002 16	M16 NYLOC NUT TYPE T GLV	8
4	B002 2160 50	M16 X 50 HIGH TENSILE SETSCREW GALV	8