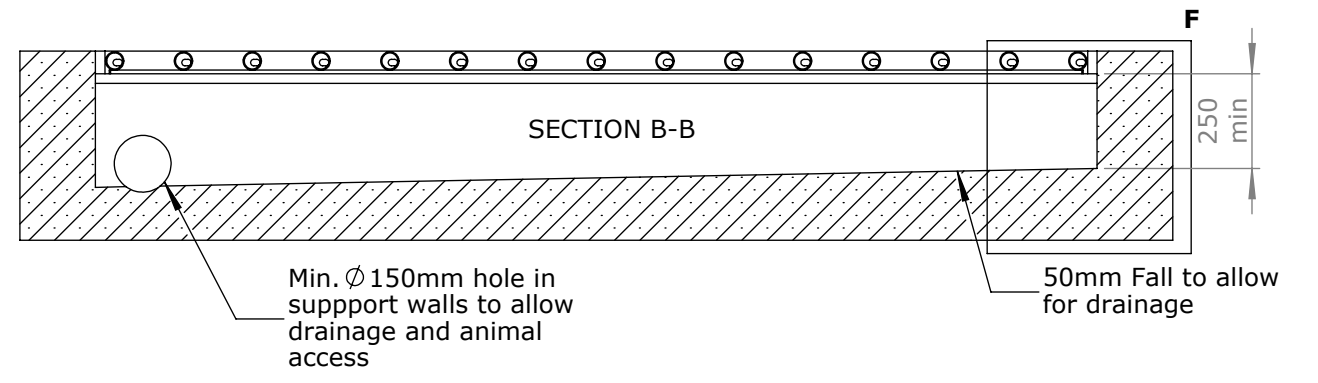


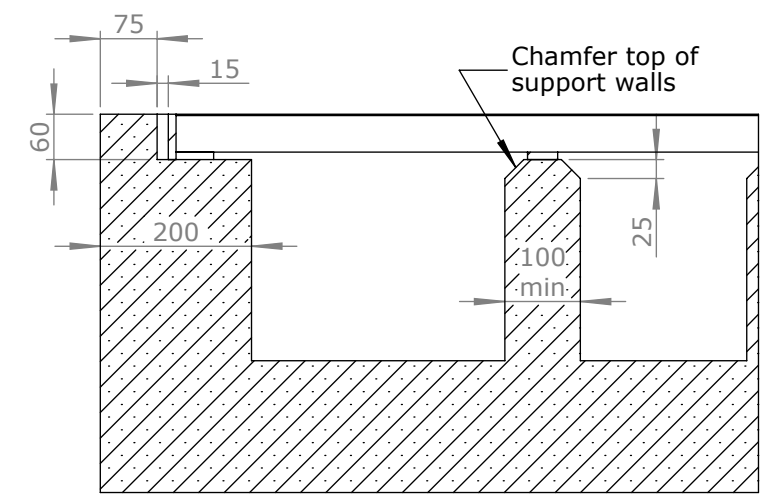
Escape ramp for small animals

Cattle grid is fabricated in 2 No sections for bolting together

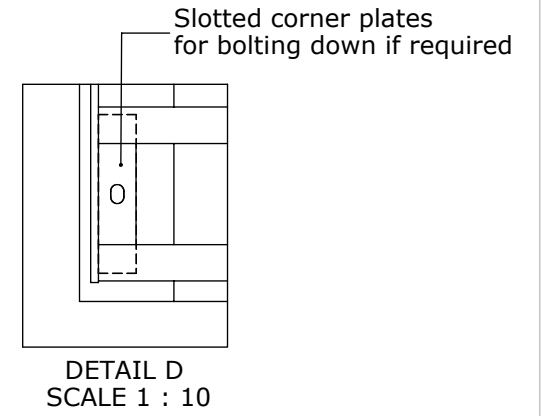


Min.  $\phi$  150mm hole in support walls to allow drainage and animal access

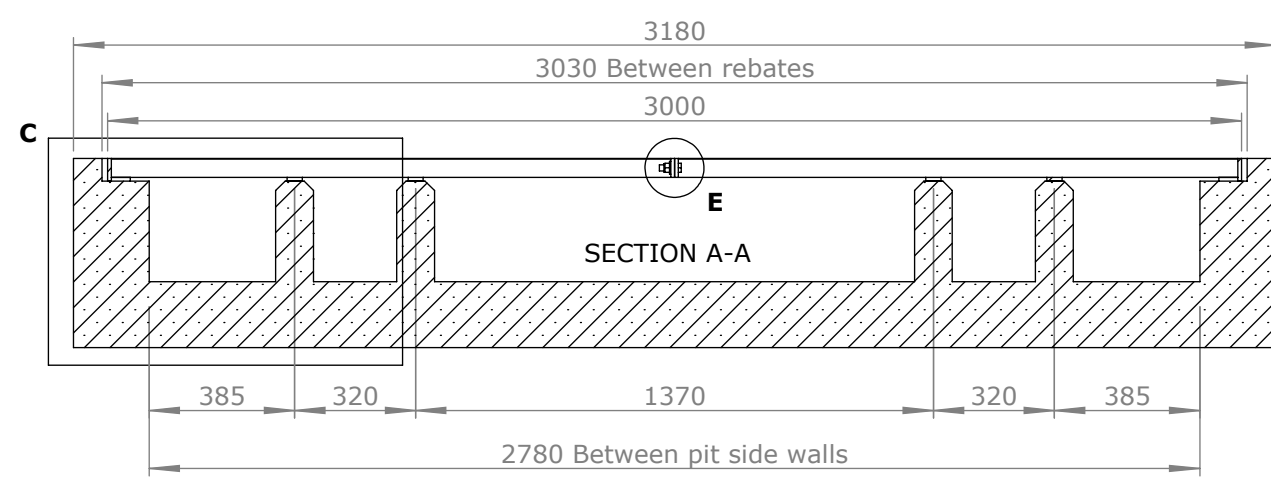
50mm Fall to allow for drainage



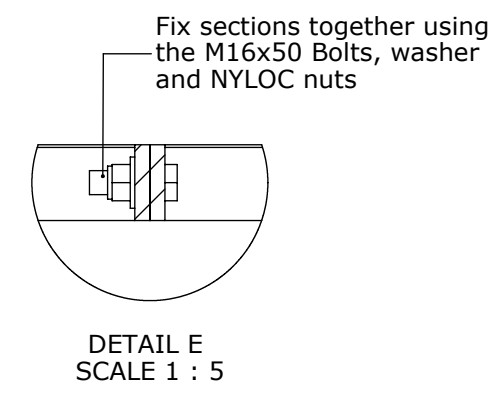
DETAIL C  
SCALE 1 : 10



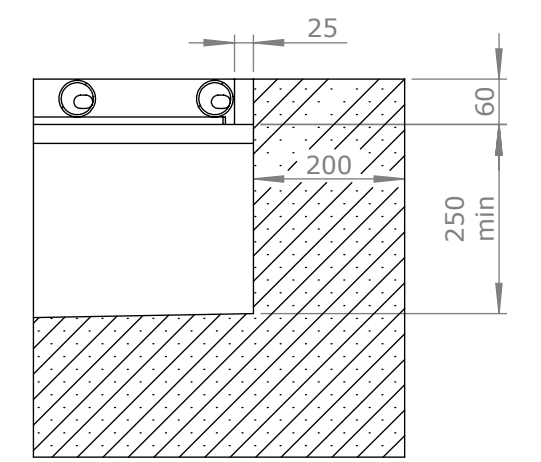
DETAIL D  
SCALE 1 : 10



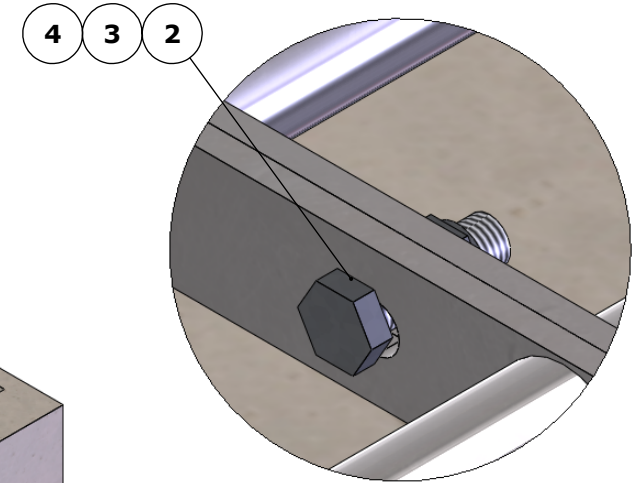
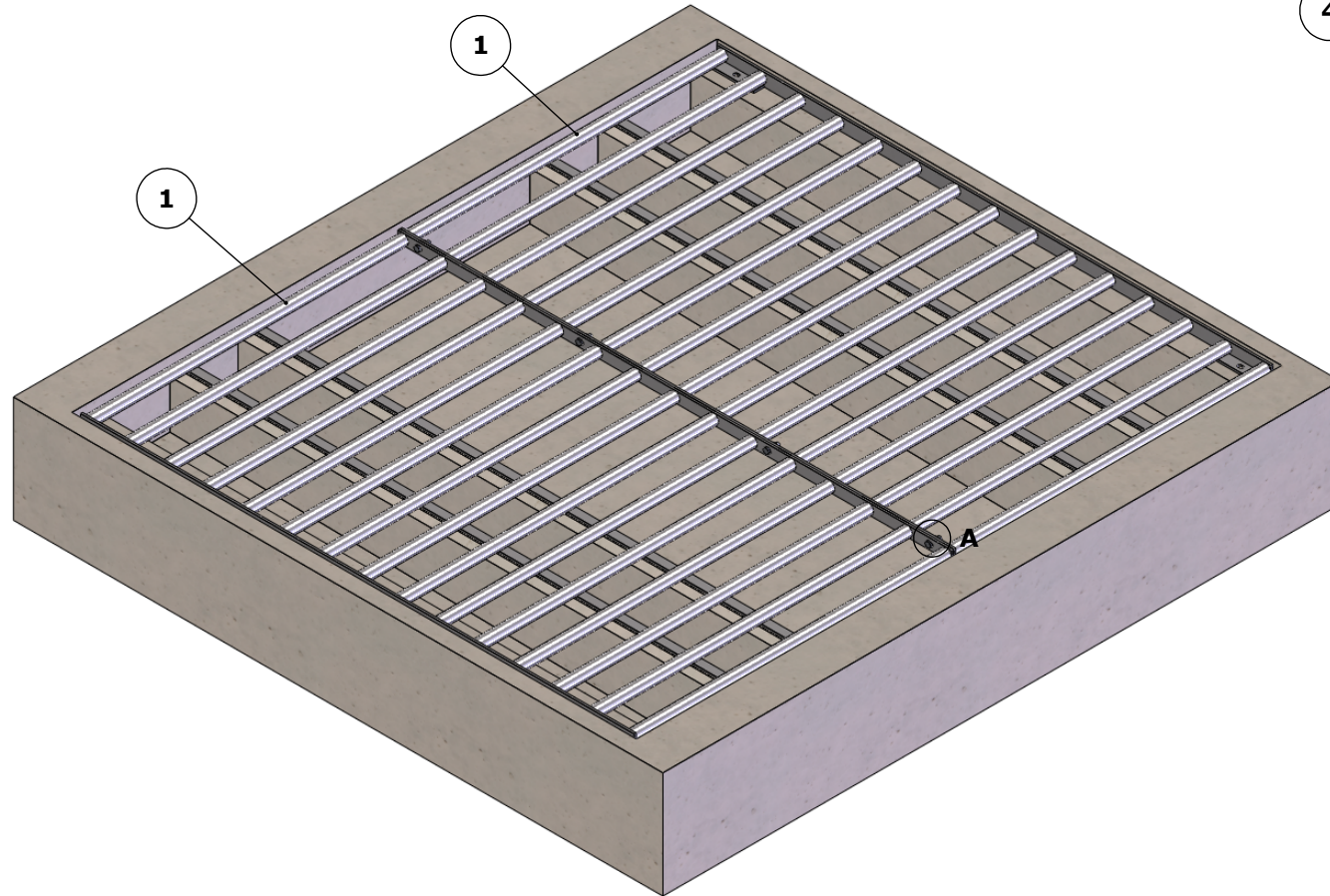
**Please Note**  
 Guard fencing needs to be erected on both sides of the cattle grid to prevent encroachment by animals and also to position vehicles correctly on the approach to the grid.



DETAIL E  
SCALE 1 : 5



DETAIL F  
SCALE 1 : 10



DETAIL A  
SCALE 1 : 2

|         |  |              |      |
|---------|--|--------------|------|
| 4       | M16 NYLOC NUT TYPE T GLV                     | B040 2002 16 | 4    |
| 3       | M16 WASHER FORM F GALV                       | B041 2006 16 | 4    |
| 2       | M16 X 50 HIGH TENSILE SETSCREW GALV          | B002 2160 50 | 4    |
| 1       | 1500 W X 2600 D SECTION OF 10 T C/GRID       | F080 2010 11 | 2    |
| REF NO. | DESCRIPTION                                  | PART NUMBER  | QTY. |
| TITLE   | <b>10 TONNE CATTLE GRID ASSEMBLY COMP OF</b> |              |      |